



# Myosin Heavy Chain, Smooth Muscle mouse mAb(ABT206)

<b>Catalog No</b>	YP-Ab-15607
<b>Isotype</b>	IgG
<b>Reactivity</b>	Human;Mouse;Rat
<b>Applications</b>	IHC;IF
<b>Gene Name</b>	MYH11 KIAA0866
<b>Protein Name</b>	Myosin Heavy Chain, Smooth Muscle
<b>Immunogen</b>	Synthesized peptide derived from human Myosin Heavy Chain, Smooth Muscle
<b>Specificity</b>	The antibody can specifically recognize human Myoglobin protein.
<b>Formulation</b>	Liquid in PBS containing 50% glycerol, 0.5% BSA and 0.134% sodium azide.
<b>Source</b>	Mouse, Monoclonal/IgG1, Kappa
<b>Purification</b>	The antibody was affinity-purified from mouse ascites by affinity-chromatography using specific immunogen.
<b>Dilution</b>	IHC-p 1:100-500, IF 1:100-500
<b>Concentration</b>	1 mg/ml
<b>Purity</b>	≥90%
<b>Storage Stability</b>	-20°C/1 year
<b>Synonyms</b>	Myosin-11 (Myosin heavy chain 11;Myosin heavy chain, smooth muscle isoform;SMMHC)
<b>Observed Band</b>	
<b>Cell Pathway</b>	Melanosome . Identified by mass spectrometry in melanosome fractions from stage I to stage IV. Thick filaments of the myofibrils.
<b>Tissue Specificity</b>	Smooth muscle; expressed in the umbilical artery, bladder, esophagus and trachea. Isoform 1 is mostly found in slowly contracting tonic muscles.
<b>Function</b>	disease:A chromosomal aberration involving MYH11 is found in acute myeloid leukemia of M4EO subtype. Pericentric inversion inv(16)(p13;q22). The inversion produces a fusion protein consisting of the 165 N-terminal residues of CBF-beta (PEPB2) and the tail region of MYH11.,disease:Defects in MYH11 are the cause of aortic aneurysm familial thoracic type 4 (AAT4) [MIM:132900]; also known as familial thoracic aortic aneurysm and dissection (TAAD). Aneurysms and dissections of the aorta usually result from degenerative changes in the aortic wall. Thoracic aortic aneurysms and dissections are primarily associated with a characteristic histologic appearance known as 'medial necrosis' or 'Erdheim cystic medial necrosis' in which there is degeneration and fragmentation of elastic fibers, loss of smooth muscle cells, and an accumulation of basophilic ground substance. Patients with AAT4 show marke

**Background**

The protein encoded by this gene is a smooth muscle myosin belonging to the myosin heavy chain family. The gene product is a subunit of a hexameric protein that consists of two heavy chain subunits and two pairs of non-identical light chain subunits. It functions as a major contractile protein, converting chemical energy into mechanical energy through the hydrolysis of ATP. The gene encoding a human ortholog of rat NUDE1 is transcribed from the reverse strand of this gene, and its 3' end overlaps with that of the latter. The pericentric inversion of chromosome 16 [inv(16)(p13q22)] produces a chimeric transcript that encodes a protein consisting of the first 165 residues from the N terminus of core-binding factor beta in a fusion with the C-terminal portion of the smooth muscle myosin heavy chain. This chromosomal rearrangement is associated with acute myeloid leukemia of the M4Eo subtype. Alter

**matters needing attention**

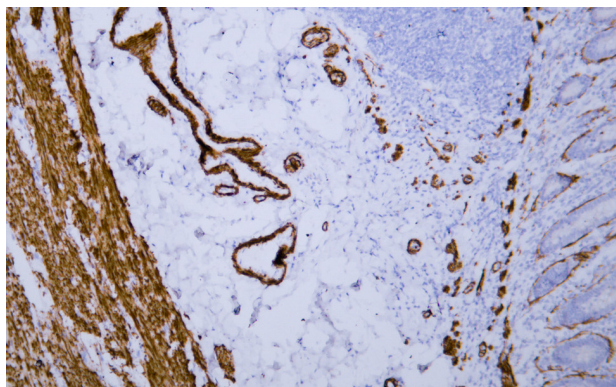
Avoid repeated freezing and thawing!

**Usage suggestions**

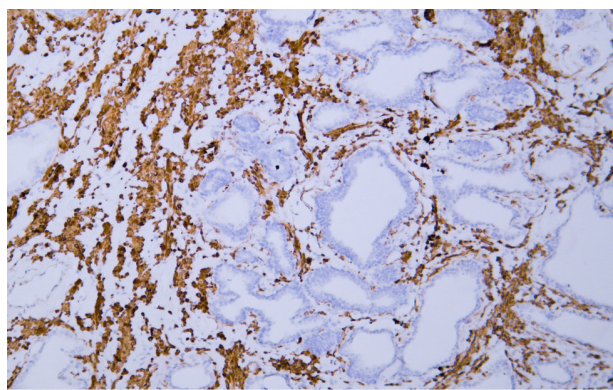
This product can be used in immunological reaction related experiments. For more information, please consult technical personnel.



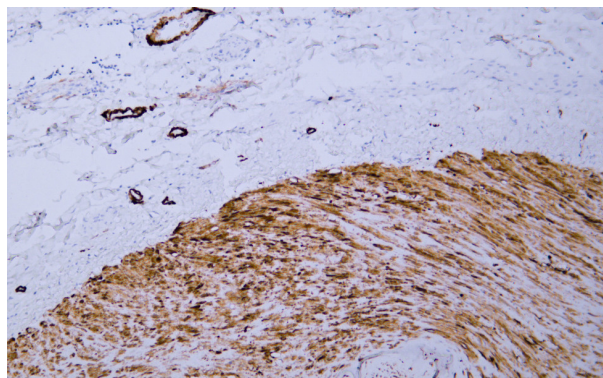
## Products Images



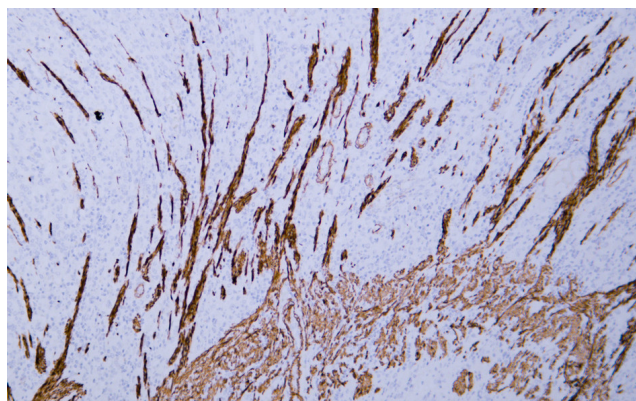
Human appendix tissue was stained with Anti-Myosin Heavy Chain, Smooth Muscle (SMMHC) (ABT206) Antibody. Secondary Antibody was Goat anti Rabbit/Mouse polymer HRP, Ready to Use (RS0011) at 37° 45min.



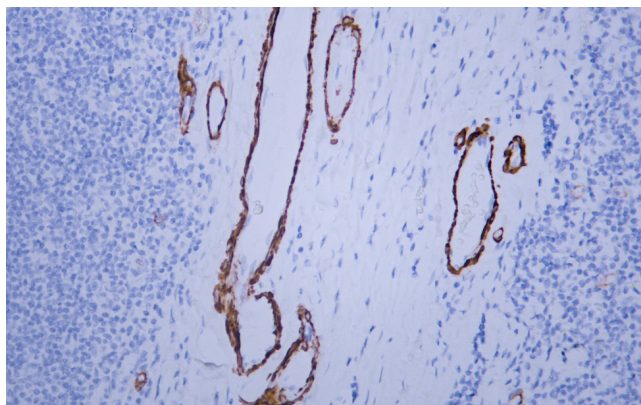
Human prostate tissue was stained with Anti-Myosin Heavy Chain, Smooth Muscle (SMMHC) (ABT206) Antibody. Secondary Antibody was Goat anti Rabbit/Mouse polymer HRP, Ready to Use (RS0011) at 37° 45min.



Human smooth muscle tissue was stained with Anti-Myosin Heavy Chain, Smooth Muscle (SMMHC) (ABT206) Antibody. Secondary Antibody was Goat anti Rabbit/Mouse polymer HRP, Ready to Use (RS0011) at 37° 45min.



Human stomach tissue was stained with Anti-Myosin Heavy Chain, Smooth Muscle (SMMHC) (ABT206) Antibody. Secondary Antibody was Goat anti Rabbit/Mouse polymer HRP, Ready to Use (RS0011) at 37° 45min.



Human tonsil tissue was stained with Anti-Myosin Heavy Chain, Smooth Muscle (SMMHC) (ABT206) Antibody. Secondary Antibody was Goat anti Rabbit/Mouse polymer HRP, Ready to Use (RS0011) at 37° 45min.